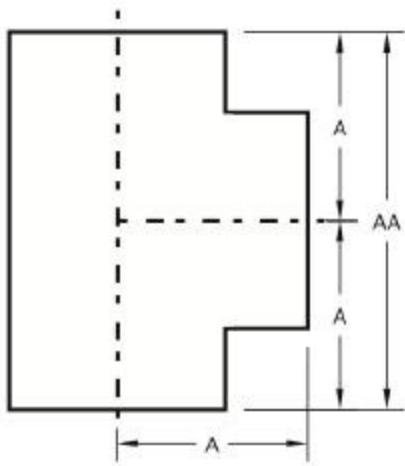


AST

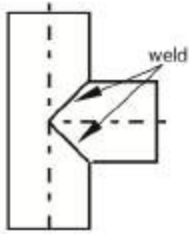


Tee (Straight)

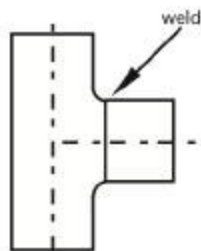


(Standard) Tee

SIZE (IPS / OD)	DIMENSIONS			
	B1 6.9 (Standard)		B1 6.1 (LongTang)	
	A	AA	A	AA
3	3 3/8	6 3/4	5 1/2	11
4	4 1/8	8 1/4	6 1/2	13
6	5 5/8	11 1/4	8	16
8	7	14	9	18
10	8 1/2	17	11	22
12	10	20	12	24
14	11	22	14	28
16	12	24	15	30
18	13 1/2	27	16 1/2	33
20	15	30	18	36
24	17	34	22	44



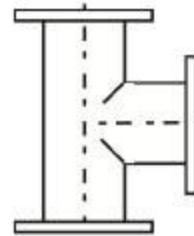
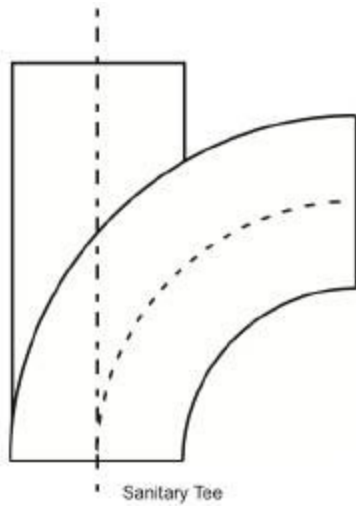
Nozzle welded tee



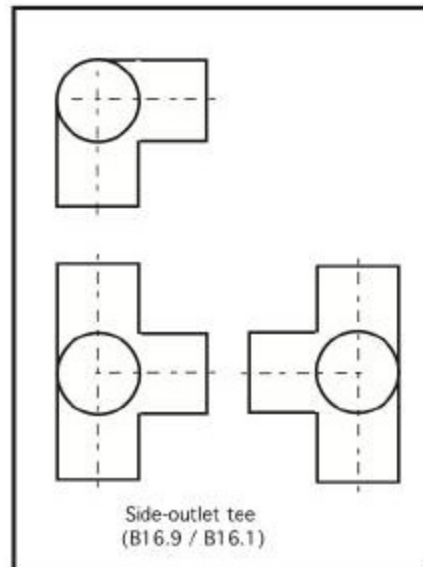
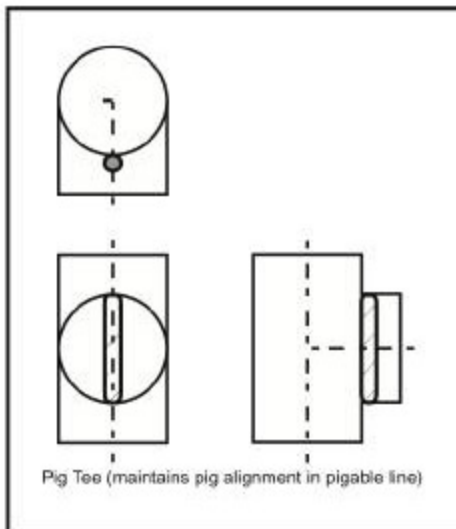
Pulled port tee



Pulled port only



Flanged Tee (B16.1)



- Manufactured to the specs and tolerances of ASTM A774.
- Custom dimensions available upon request.
- Available in 304L, 316L, 317L; other materials upon request.
- Available ends for B16.9: butt weld or beveled.
- Available ends for B16.1: butt weld, beveled, grooved, flanged, or Van Stone.